



MONTHLY MEMBERSHIP PROGRESS REPORT

District 25 B

Results as of: 02/28/2019

GMT: STEVE ANTON

LOCATION INDIANA

GMT CA

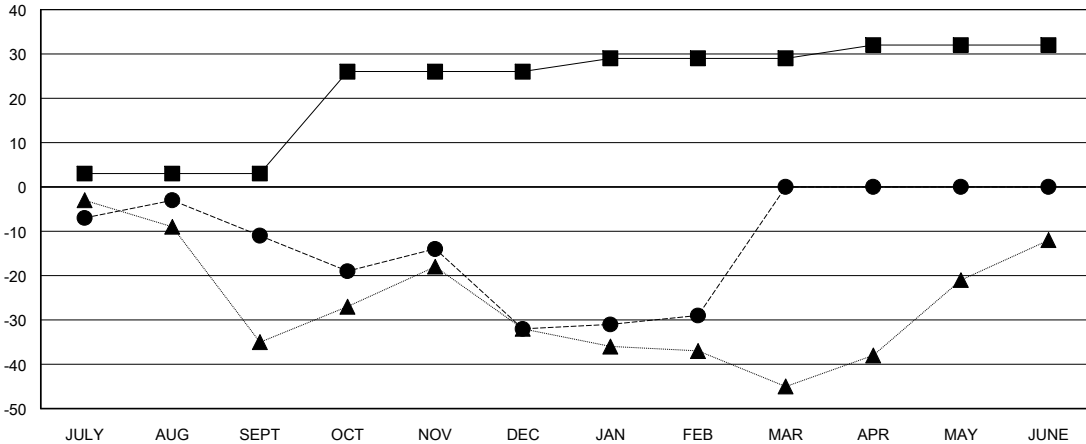
Clubs			
RESULTS FOR 2018-2019			
QUARTER	NEW CLUB GOAL	NEW CLUBS	DROPPED CLUBS
JULY/AUG/SEPT	0	0	0
OCT/NOV/DEC	1	0	0
JAN/FEB/MAR	0	0	1
APR/MAY/JUNE	0	0	0

Members			
RESULTS FOR 2018-2019			
QUARTER	MEMBER GROWTH NET GOAL	MEMBER GROWTH ACTUAL	DROPPED MEMBERS ACTUAL (including transfers)
JULY/AUG/SEPT	3	17	27
OCT/NOV/DEC	23	23	42
JAN/FEB/MAR	3	20	13
APR/MAY/JUNE	3	0	0

GOALS AND ACTUAL NEW CLUBS CUMULATIVE



GOALS AND ACTUAL MEMBERS CUMULATIVE



DROPPED CLUBS: 1

24 CLUBS OF 51 ADDED 1 OR MORE NEW MEMBERS

GENDER DISTRIBUTION	
MALE	902 (73.27%)
FEMALE	329 (26.73%)
Women Percentage Fiscal Year Goal: 30%	

DROPPED MEMBERS	
DECEASED	11
CLUB CANCELLED	0
OTHER	71
TOTAL	82

[CLICK HERE FOR CUMULATIVE MEMBERSHIP DATA](#)

TOTAL FAMILY UNIT MEMBERS	229
FAMILY MEMBERS PAYING HALF DUES	116